

Non-Magnetic Access Flooring



Building the World to Last®

Metal access floor panels, found in MRI magnet rooms, are no longer allowed to be used due to new cable routing requirements that some MRI vendors have implemented.

Fibergrate Composite Structures' covered Micro-Mesh® grating panels and non-magnetic pedestals should be the first choice for customers or architects requiring MRI cable routing via flush or surface mounted access flooring. Fibergrate offers a completely non-magnetic system.

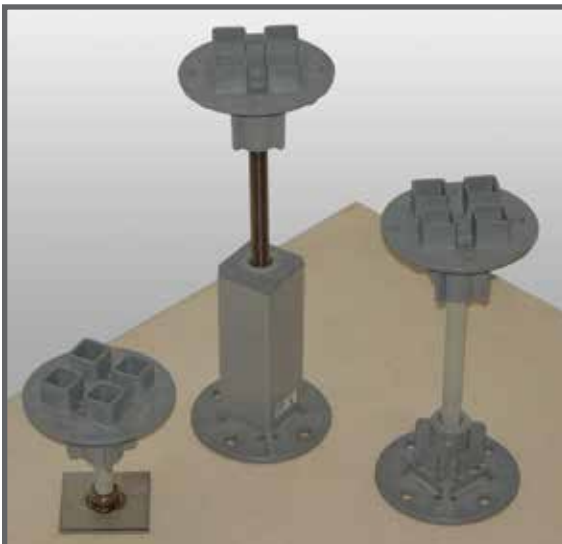
Fibergrate has customized our standard Micro-Mesh® panels and pedestal systems in order to provide a solid top Micro-Mesh panel covered with a high pressure floor laminate and non-magnetic grating pedestals to more completely meet the needs of this new and demanding application. Pedestals are manufactured using Stainless Steel 316 nuts in the composite head and Glass Reinforced Plastic (GRP) rod for adjustability.

Fibergrate Composite Structures is the originator of moulded Glass Reinforced Plastic (GRP) grating. With nearly 50 year of experience, Fibergrate continues to lead the industry in innovative products and has the ability to provide customized solutions to address unique issues for our customers.

Surface Resistance

When tested according to the procedure outlined in NFPA 99, the high pressure floor laminate used to cover the Micro-Mesh grating panel has a maximum resistance of 20,000 megaohms measured between the laminate surface and an applicable ground reference. (Typical Values: 11,000-12,000 megaohms)

Flooring System Pictures



*Pedestals as short as 89mm are available on request. Contact Fibergrate for details.



Fibergrate's Quad Head pedestals can be located anywhere within the Micro-Mesh® panel or to join two or four panels.



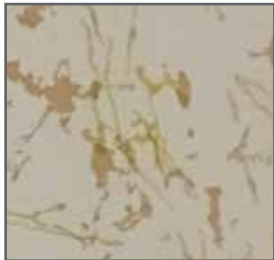
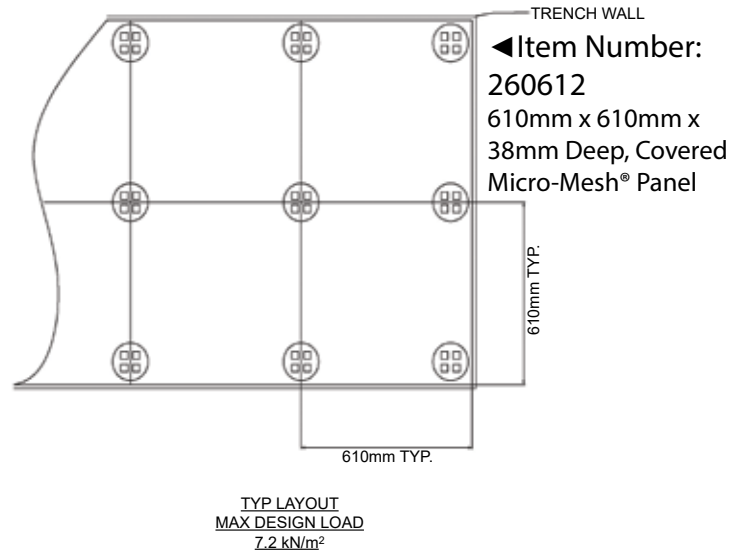
Non-Magnetic Access Flooring System

Details

"A" Dim Adjustment Range

Item Number	Base	Min (mm)	Max (mm)
569605	SS Base	127*	165
569706	127mm Std Base	165	235
569708	127mm Std Base	216	292
569810	127mm Ext Base	267	343
569812	127mm Ext Base	318	394
569814	127mm Ext Base	368	445
569816	127mm Ext Base	419	495
569818	127mm Ext Base	470	546
569820	127mm Ext Base	521	597
569822	127mm Ext Base	572	648
260612	Micro-Mesh® 610mm x 610mm x 38mm Deep, No Grit, Dark Grey, Covered with Beige Concord Papercraft High Pressure Laminate Designed for Raised Floor Panels		

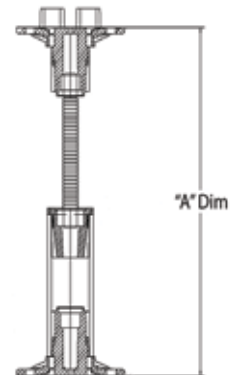
Pedestal Layout



Beige Concord Papercraft High Pressure Laminate

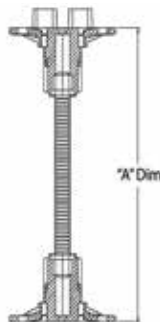
Please Note: Colour may vary slightly from actual product due to photography and printing processes.

127mm Extended Base Model



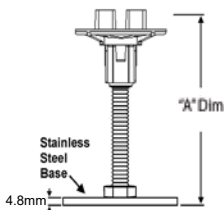
Item Numbers:
569810, 569812, 569814,
569816, 569818, 569820,
569822

127mm Standard Base Model



Item Numbers:
569706, 569708

Flat Base Model



Item Number:
569605



Phone: +44(0) 191 402 1920



fibergrate.uk



info@fibergrate.com

Fibergrate Composite Structures Inc. believes the information contained here to be true and accurate. Fibergrate makes no warranty, expressed or implied based on this literature and assumes no responsibility for consequential or incidental damages in the use of these products and systems described, including any warranty of merchantability or fitness. Information contained here is for evaluation only.
©Fibergrate Inc. 2024 - Non-Magnetic-Access-Flooring-System-Metric.UK.PDF - 03/24



Building the World to Last®